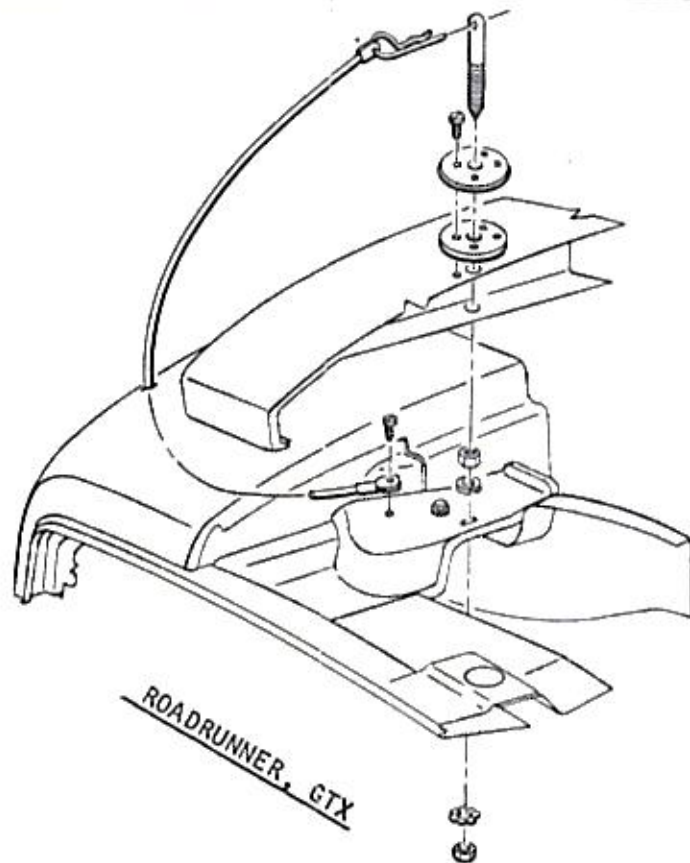
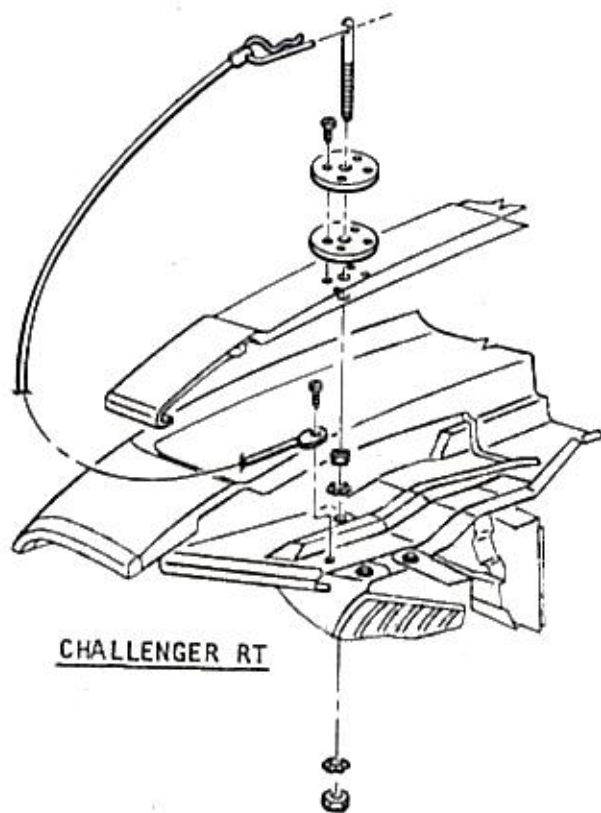


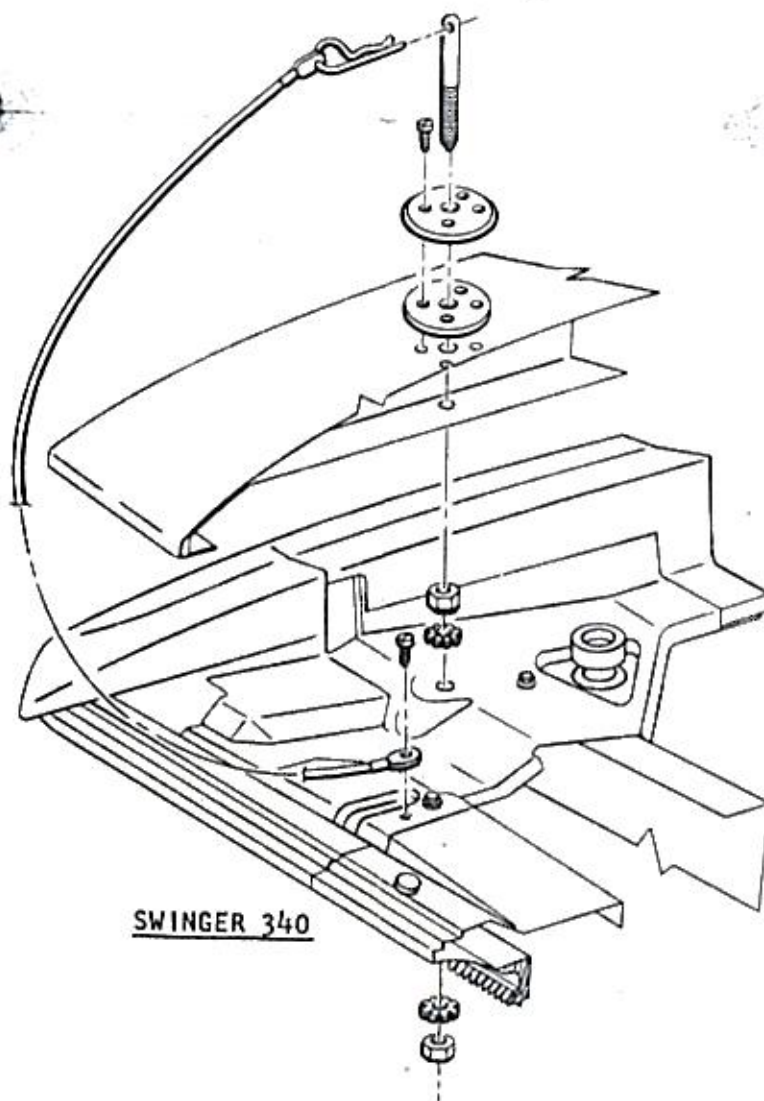
SUPER BEE, CORONET RT



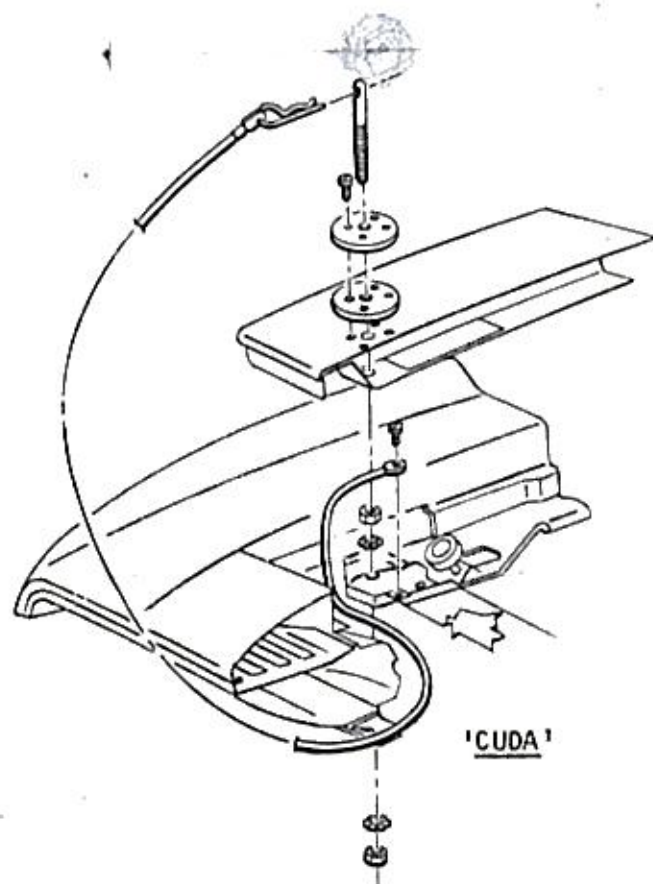
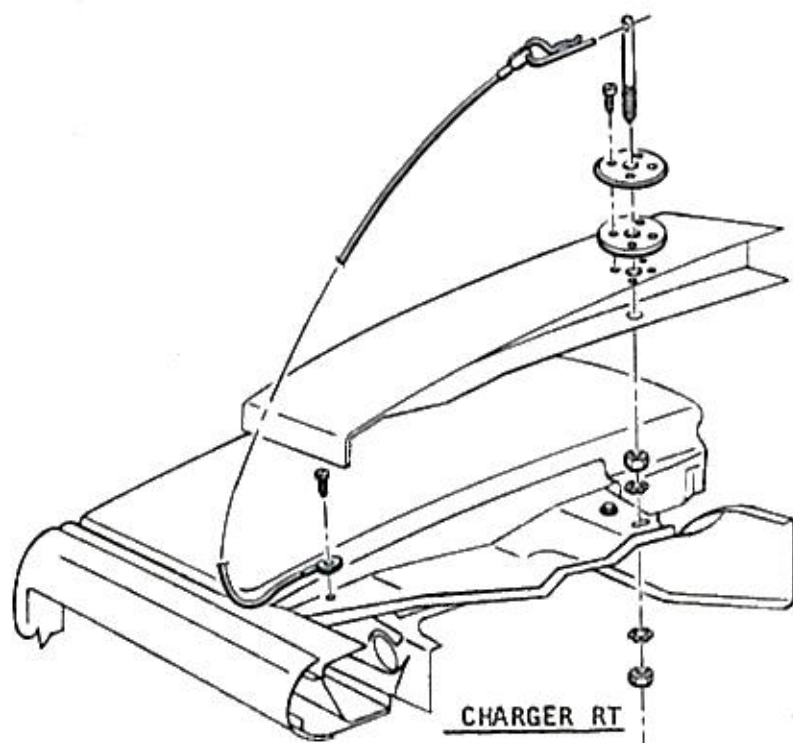
ROADRUNNER, GTX



CHALLENGER RT



SWINGER 340



SWINGER 340, CHALLENGER RT

1. Install stud pin in front fender flange.
2. Install cable and pin assembly to radiator grille crossbar.
3. Use stud pin to locate holes in hood and drill 1 1/8" dia. holes in outer hood panel.
4. Close hood and place bezel over installed stud pin and drill four 1/8" dia. holes.
5. Install bezel and gasket.
6. Insert pin end of cable into hole in stud pin from front of car. Adjust pin height for 3/32" clearance between pin and bezel.

PARTS

SUPER BEE, CORONET RT, ROAD RUNNER, GTX, CHARGER RT



1. Ream out existing inboard fastener hole to 17/32" in front fender flange and radiator yoke crossmember.
2. Install stud pin in radiator yoke crossmember.
3. Locate and drill 1 1/8" dia. hole in outer hood panel.
4. Install cable and spring assembly to front fender flange extension. On Coronet RT, first route through radiator grille assembly above inboard headlamp.
5. Close hood and place bezel over stud pin and drill four 1/8" dia. holes.
6. Install bezel and gasket.
7. Insert pin end of cable into stud from front of car. Adjust pin height for 3/32" clearance between pin and bezel.

'CUDA'

1. Remove attaching bolts from front fender flange extension to radiator yoke crossmember.
2. Install brackets Part Number 3508 570-71 to front fender flange extension and radiator yoke crossmember. (Brackets are not part of the package.)
3. Install stud pin in bracket.
4. Use stud pin to locate holes in inner hood panel and drill 1 1/8" dia. holes.
5. Install cable and pin assembly to bracket.
6. Route the cable through the grille just below the parking lamps.
7. Close hood and place bezel over installed stud pin and drill four 1/8" dia. holes.
8. Install bezel and gasket.
9. Insert pin end cable into hole in stud pin from front of car. Adjust pin height for 3/32" clearance between pin and bezel.